



As one of the largest manufacturers of building materials in North America, KP Building Products is renowned for offering a vast array of innovative industry-leading products.

We work hard to ensure customer satisfaction with a limited lifetime warranty. Read our full warranty for details. They are available from any KP distributor or on our website at www.KPvinylsiding.com



TrimFX® Decorative Vinyl Trims



Perfection Shingles



Soffits



Aluminium Trims & Accessories

Now in Easy-Care Exteriors



WWW.KPVINYLSIDING.COM

All trademarks are owned by KP Building Products.

©2021 KP Building Products. All rights reserved

KPVSO-21A



Made in the U.S.A.



Vinyl Soffit
Strength That Goes the Distance

Inspiration Realized

STRENGTH That Goes the EXTRA Mile.

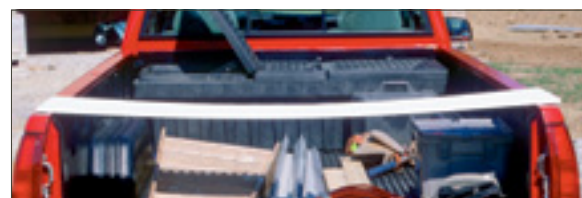
For longer soffit expanses you need a soffit panel that can span the distance without sagging. You need KP I-Span™. With a 3/4" profile height, .046" wall thickness and I-beam construction, KP I-Span is designed for outstanding rigidity. A more rigid soffit panel provides a flatter, straighter appearance. In fact, KP I-Span resists sagging on over hangs up to 48".

And LOOKS GOOD Doing It.

KP I-Span features a smooth, matte texture that never needs painting. It's virtually maintenance free; it won't rot, peel, chip, flake or blister. And the Intellivent™ invisible venting system provides necessary attic ventilation without calling attention to your overhand with unsightly perforation. Every panel looks uniform. KP I-Span soffit is the perfect complement to any KP siding.



- Smooth matte texture that never needs painting.
- Virtually maintenance free.
- 3/4" profile height and .046" wall thickness.
- Innovative KP I-beam construction for enhanced rigidity to span distances of up to 48".
- **KP Intellivent™** invisible venting provides necessary attic ventilation without calling attention to the soffit.



Ordinary soffits can't support their own weight over a long expanse.



KP I-Span's I-beam construction provides added rigidity to span distances up to 48".

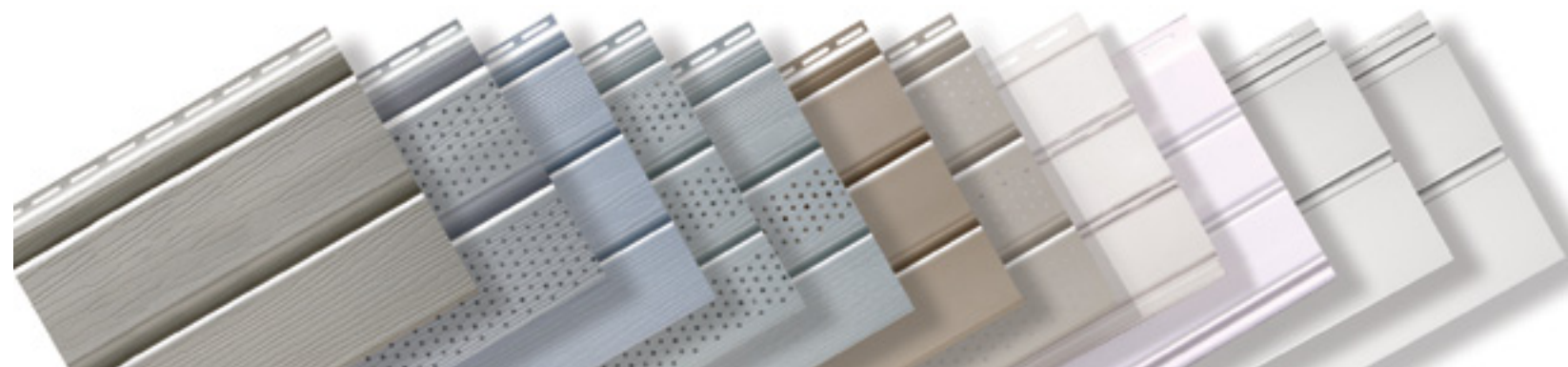


COMPLETE the LOOK Of Your Home.

KP Vinyl Soffit gives your home a finished look and virtually eliminates maintenance in those hard-to-reach areas, like under eaves and over porches. With the beauty of painted wood and the durability and low maintenance of vinyl, KP soffits are available in either a wood grain finish or smooth with a low-gloss finish. Complete the design with KP's fully compatible accessories line for the look you've always imagined for your home.

KP Vinyl Soffit is available in an array of thicknesses and styles that include Solid, Vented and Center Vented panels and a large selection of fully saturated colors reflecting the latest design trends. Choose KP Vented Soffit panels for ventilation to attics or when air flow is required.

As with all of KP's vinyl products, our Vinyl Soffits are made with an exclusive ChromaLock™ Vinyl Formula. From arctic to desert conditions, the ChromaLock™ state-of-the-art process and high quality ingredients ensure not only top performance in all types of environments but are virtually maintenance free.



10" Solid/Vertical WG Double 5" Soffit

10" Perforated Double 5" Soffit

12" Solid WG Triple 4" Soffit

12" Perforated Triple 4" Soffit

12" Center Vent Perforated Triple 4" Soffit

12" Solid Matte Triple 4" Soffit

12" Perforated Matte Triple 4" Soffit

8" Beaded Brushed Vented Soffit

8" Beaded Brushed Soffit

I-Span™ Solid/Vertical Siding D5 Soffit

I-Span™ Vented Solid D5 Soffit